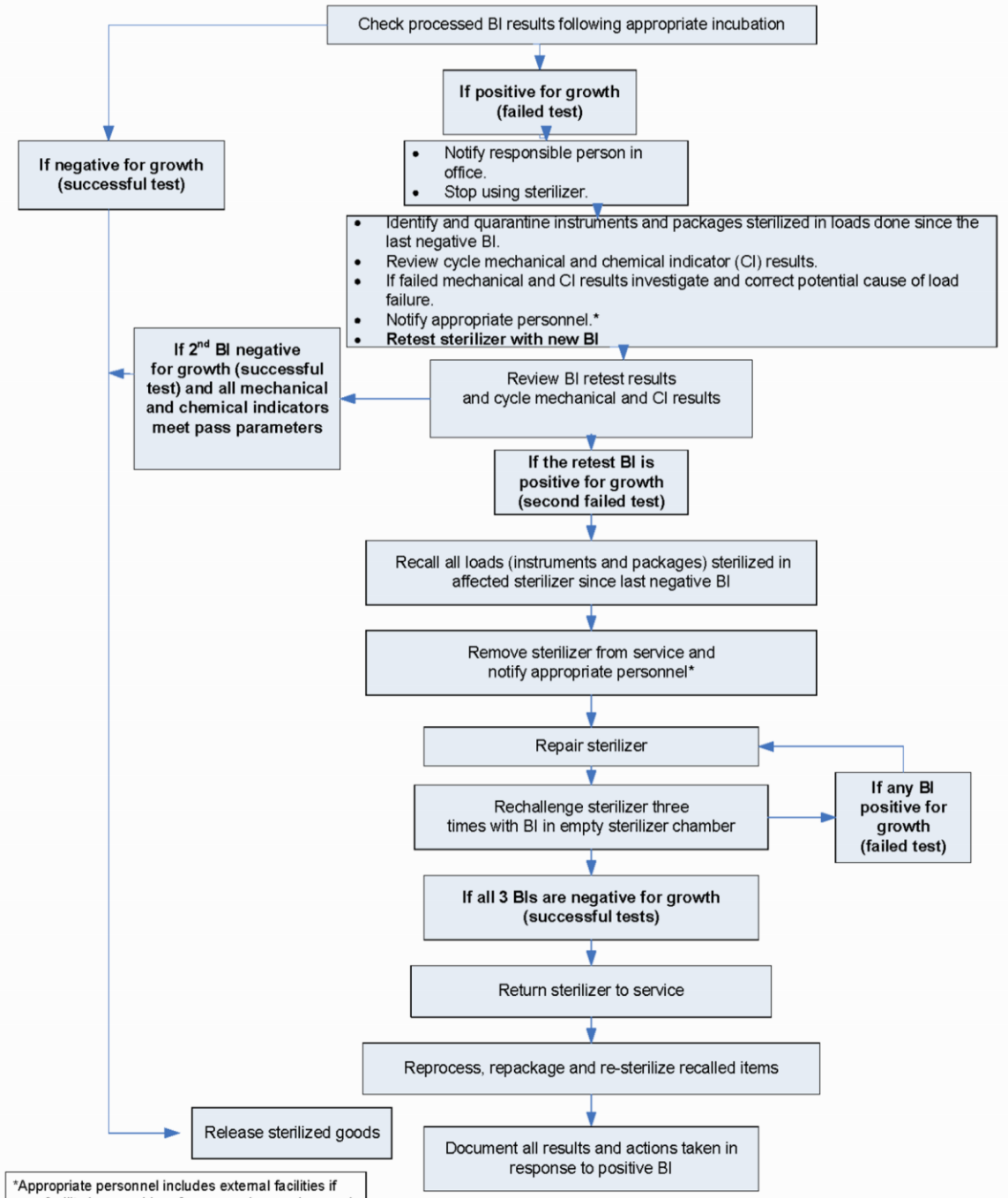


**Positive (Failed) Biological Indicator (BI) Protocol  
for the Physician's Office**



\*Appropriate personnel includes external facilities if your facility is a provider of reprocessing services and your sterilizer maintenance/service provider. Local Medical Officer of Health (MOH) must be contacted if patients were exposed to instruments processed in failed loads.

Adapted from CSA Z314.3-09 Effective Steam Sterilization in Health Care Facilities by the Steam Process April 16, 2010