



Updated Alberta building code for new or renovated offices and examining rooms

As of April 1, 2019, there is a change in Alberta's building code that will affect physicians who will be constructing new offices and examining rooms. Substantial renovations that affect a buildings structure or footprint will also be within scope for these new requirements. This change in Alberta's building code came about to make physicians' clinics and offices more accessible for people with physical and auditory disabilities.

A six-month transition period will be in effect to allow building designers the opportunity to familiarize themselves with the new requirements. For example, permits that are granted prior to April 1, 2019, but for which construction doesn't commence until June, are not affected.

The details of the new changes are below and more information can be found on the Alberta Government website at www.municipalaffairs.gov.ab.ca.

3.8.5. Access to Physician Clinics and Offices

3.8.5.1. Application

- 1) This Subsection applies to physician clinics and offices that provide professional health care services. (See Note A-3.8.5.1.(1).)

3.8.5.2. Physician Clinics and Offices

- 1) Every doorway that is located in a *barrier-free* path of travel to a physician clinic or office shall have a clear width not less than 915 mm when the door is in the open position.
- 2) Every door that is located in a *barrier-free* path of travel to a physician clinic or office shall be equipped with a power door operator that complies with Subsection 3.8.3. and allows persons to activate the opening of the door in the intended direction of travel.
- 3) The main waiting area shall be designed to allow a person using a wheelchair to turn in an open space not less than 1,500 mm in diameter.
- 4) An assistive listening device shall be provided at the main reception area and in at least one physical examination or treatment room. (See Note A-3.8.3.18.)

3.8.5.3. Accessible Examination and Treatment Rooms (See Note A-3.8.5.3.)

- 1) One in every five examination rooms or part thereof shall
 - a. have a doorway with a clear width not less than 915 mm when the door is in the open position,
 - b. be designed to allow a person using a wheelchair to turn in an open space not less than 1,500 mm in diameter, and
 - c. have one lavatory conforming to Article 3.8.3.15.
- 2) One in every five treatment rooms or part thereof shall



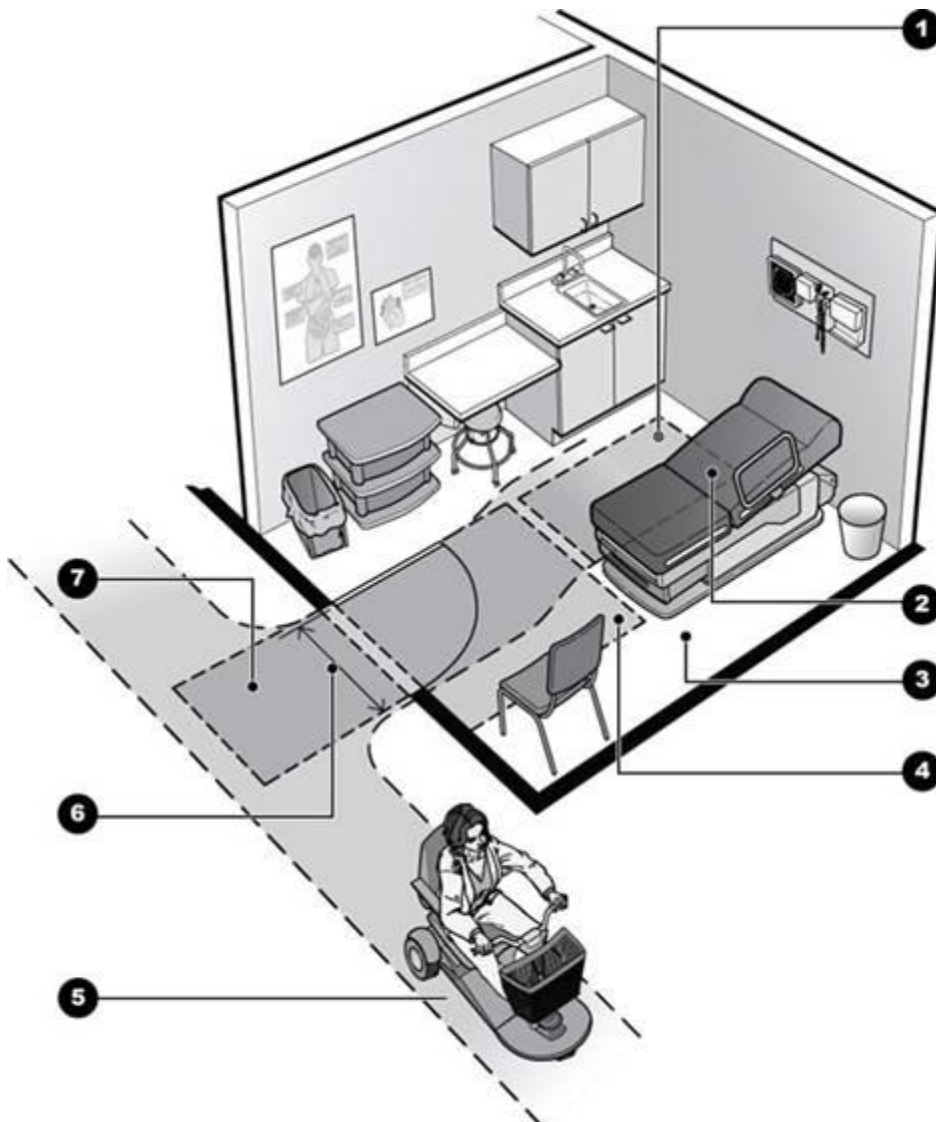
- a. have a doorway with a clear width not less than 915 mm when the door is in the open position,
- b. be designed to allow a person using a wheelchair to turn in an open space not less than 1,500 mm in diameter, and
- c. have one lavatory conforming to Article 3.8.3.15.

A-3.8.5.1.(1) Access to Physician Clinics and Offices.

“Professional health care services” mean services offered by physicians registered with the College of Physicians and Surgeons of Alberta.

A-3.8.5.3. Accessible Examination and Treatment Rooms.

These provisions are intended to allow a person using a wheelchair to comfortably enter and use an examination or treatment room. Figure A-3.8.5.3., which is adapted from “Americans with Disabilities Act: Access to Medical Care for Individuals with Mobility Disabilities,” shows settings for an accessible examination room.





College of
Physicians
& Surgeons
of A l b e r t a

- 1) A clear floor space, adjacent to the exam table and adjoining accessible route make it possible to do a side transfer.
- 2) Adaptable, adjustable and accessible examination equipment.
- 3) Space between table and wall allows a person to assist with patient transfers and positioning.
- 4) Amount of floor space needed beside and at end of exam table will vary depending on method of patient transfer.
- 5) Barrier-free path of travel connects to other accessible public and common use spaces.
- 6) Accessible entry door.
- 7) Maneuvering clearance.

Adapted from “Americans with Disabilities Act Access to Medical Care for Individuals with Mobility Disabilities.”